



France Pavilion World Expo Osaka 2025

Interior design by José Lévy,
Creative Director of the France Pavilion



« The France Pavilion is a showcase for all of France's artistic wealth, expressed through an editorial thread - an hymn to love - in its most open and plural meaning. My role here is to conceive and design all the different spaces that complement the permanent exhibition and help convey these messages to all Pavilion's visitors, not only the general public, but also the professional areas such as the lounges designed for patrons and protocol. I am very keen to show and defend a realistic and poetic French creation as much as an historical and contemporary one. A creation both rich and plural through its diversity: art, design, music, floral art...

The unique Franco-Japanese relationship has always stimulated the artistic imagination and is a constant source of inspiration for many designers. I don't know a single French artist who doesn't love Japanese culture: from the urban vibrancy of Shibuya to the beaches of Okinawa and the volcanic forests of Yaku-shima, from Zen and Shinto traditions to manga and animes, Japan has never ceased to fascinate; beauty, discipline and purity, without forgetting a certain spirit of dissipation and excess... In return, Japan has never ceased to reaffirm the strength of its reciprocal relationship with France, which has always been one of its favorite destinations. The France Pavilion reflects this mutual tropism and invites to take a look at the French scene of yesteryear, today and tomorrow. Whatever I draw, there's always some Japanese spirit emanating from it..»

José Lévy,

Creative Director of the France Pavilion Osaka 25



JOSÉ LÉVY

José Lévy is a multidisciplinary artist who navigates successfully between the decorative and plastic arts, infusing them with poetry and humor. Each of his creations expresses a unique blend of fantasy and rigor. This project is a continuation of his work, which is characterised by a constant dialogue between French and Japanese cultures. José Lévy has had a close relationship with Japan since childhood, thanks to his grandparents, official suppliers of tatami mats for the Olympic Games and collectors of Japanese art.

This fascination was reinforced by numerous collaborations with Japan, such as his stay at the Villa Kujoyama, for which he created *Le Veilleur*, a 7-meter paper lamp in the shape of a samurai, a symbol of Franco-Japanese interaction that reflects his ability to blend cultures in a more contemporary approach. This artistic dialogue with Japan runs through all his work and enriches his unique way of looking at tradition and how it can be reinvented.

He has been awarded the Grand Prix de la Ville de Paris and the Villa Kujoyama (Kyoto) and made Chevalier des Arts et des Lettres. He collaborates with prestigious cultural institutions and publishers such as the Manufacture de Sèvres, the Cristallerie de Saint Louis, Hermès, Astier de Villatte, Roche-Bobois, Dyptique, Serax and Lelièvre. His works are exhibited in the best institutions, such as the Musée Guimet, the Musée de la Chasse, the Petit Palais, the Palais de Tokyo and Perrotin.



France Pavilion

Interior design by José Lévy

Guided tour

THE PROTOCOL LOUNGE

Located on the third floor, the Protocol Lounge is a reception area designed to host diplomatic meetings, business appointments and cultural exchanges. It embodies classic elegance mixed up with a more contemporary approach to French design, while incorporating Japanese influences. The lounge has been designed to reflect the artistic heritage and know-how of France, in a constant and respectful dialogue with Japan.

Whether it's furniture, lighting or art, each piece has been selected to represent excellence and refinement in their most harmonious form. The space evolves around three poles, where timeless French elegance meets minimalist Japanese harmony. All of this is tied together by the cabochon flooring typical of French castles, which gives this ceremonial lounge a classic and piquant feel. Historical pieces by Pierre Paulin coexist with contemporary creations in lacquer and tatami mats by José Lévy, symbolising the mutual respect between two cultures, brought together around a Cinna's raw green sandstone table, reminiscent of a dream stone. The centrepiece is a large table in burnt wood by Ligne Roset, surrounded by 8 unique reception chairs by Cinna in Japanese-inspired pastel shades.

Each element has been curated - or created - to provide a sense of warm welcome that encourages contemplation. **Alain Ellouz's** alabaster lamps create a soft and immersive atmosphere. Ceiling and pendant luminaires create a constellation, while table lamps illuminate the meeting areas indirectly. The Franco-Japanese photocall is an original design created to welcome official moments. A lacquer and silver leaf folding screen designed by **Garnier & Linker** for the Japanese publisher **Kouseido** and 'Le Baiser', a Falconet statue from the **Manufacture de Sèvres** - with a base redesigned by **Sam Baron** - add a touch of art to the space. Original prints by **Paul Jacoulet** (1896-1960), French artist renowned for his fine, colorful Japanese prints, adorn the walls throughout, testifying to the rich artistic links between France and Japan. In addition, highly polished metal panels play with light and perspective to create a dynamic visual experience.

THE PROTOCOL LOUNGE

ASSOCIATED FURNITURE / CURATION JOSÉ LÉVY



Ligne Roset x Pierre Paulin
Andy black leather armchair



Ligne Roset x Pierre Paulin
Andy black leather sofa



Kouseido x Pierre Charrié
Tenkai wooden side table



Cinna x Alain Gilles
Saragosse coffee table



Ligne Roset x Guillaume Delvigne
Interval table in black wood



Ligne Roset x Claudio Dondoli & Marco Pocci
8 Silvio/Silvia chairs in different colours



Ligne Roset x Sebastian Herkner
Janus dresser



Ligne Roset x Oleg Pugachev
Tambour sofa end

THE PROTOCOL LOUNGE
ASSOCIATED EDITIONS & LUMINAIRES / CURATION JOSÉ LÉVY



Kolkhoze x José Lévy
Moving Tatami I bench



Kouseido x Garnier & Linker
Silver screen / silver leaf on wood



Kolkhoze x José Lévy
Moving Tatami II bench



Atelier Alain Ellouz
Alabaster table lamp



Atelier Alain Ellouz
Infinity alabaster pendant light



Atelier Alain Ellouz
Luna alabaster pendant light

THE PROTOCOL LOUNGE
ASSOCIATED ARTWORKS / CURATION JOSÉ LÉVY



Manufacture de Sèvres x Sam Baron
«Le baiser» sculpture by Falconet



Print by Paul Jacoulet
The Mysterious Pacific,
South Seas
July 1951



Print by Paul Jacoulet
The Nautilus, Yap
April 1958



Print by Paul Jacoulet
The song of the waves,
Ponape, Eastern Carolinas
April 1938



Print by Paul Jacoulet
Basilio, young boy from Saipan
holding shells.
Marianas, shell series
August 1934



Design ©José Lévy

Atelier Alain Ellouz luminaires
Ligne Roset x Claudio Dondoli & Marco Pocci chairs
Ligne Roset x Guillaume Delvigne table

Ligne Roset x Pierre Paulin sofas & armchairs
Cabochon effect flooring

Paul Jacoulet prints
Ligne Roset x Sebastian Herkner dresser
Kouseido x Pierre Charrié side table



Design ©José Lévy

Kouseido x Pierre Charrié side tables
Kolkhoze x José Lévy benches
Cabochoon effect flooring

Atelier Alain Ellouz luminaires
Ligne Roset x Claudio Dondoli & Marco Pocci chairs
Ligne Roset x Guillaume Delvigne table

Salons Ligne Roset x Pierre Paulin sofas & armchairs
Cinna x Alain Gilles side tables
Paul Jacoulet prints



Design ©José Lévy

Kouseido x Garnier & Linker screen
«Le Baiser» sculpture by Falconet - Sam Baron x Manufacture de Sèvres
Paul Jacoulet prints
Ligne Roset x Pierre Paulin sofas & armchairs
Ligne Roset x Alain Gilles side tables

Atelier Alain Ellouz luminaires
Ligne Roset x Claudio Dondoli & Marco Pocci chairs
Ligne Roset x Guillaume Delvigne table
Ligne Roset x Oleg Pugachev sofa ends
Kolkhoze x José Lévy benches

THE PROTOCOL OFFICE

On the third floor, the office of Jacques Maire, General Commissioner of the France Pavilion, is designed to host official meetings, diplomatic exchanges and events in a more intimate setting, with the same spirit and artistic direction as the Protocol Lounge. Around the **Ligne Roset** table, three **Soko** chairs dressed up in the colors of France, Japan and Love, form a «**Trio Amoureux** » (love triangle), under the creative impulse of **José Lévy** to celebrate the «hymn to love», the main theme of the France Pavilion.

A subspace functions as a 'deconstructed' meeting room with five **Soko** chairs arranged like a Kokeshi dolls installation, famous figures of Japanese folk art. This area is lit by lamps designed by **Joseph-André Motte** for **Disderot**, which refer to Japanese lanterns while remaining emblematic pieces of the French design. These lamps make a connection with the Motte furniture developed by **Duvivier Canapés** under the artistic direction of **José Lévy**, based on plans drawn up by **Joseph-André Motte** preserved at the **Mobilier national** in Paris.

Along the wall is a wooden shelf created by **José Lévy** for **Kouseido** is facing a wall of mirrors that increases the sense of volume tenfold, revealing the reflection of the 'Geisha leaving a taxi' photo by artist **Philippe Marinig**, Villa Kujoyama 2011 prizewinner. This image adds a narrative dimension to the installation under the soft light of the washi paper lamp, a light suspension created by **Céline Wright**, Villa Kujoyama 2021 prizewinner.

THE PROTOCOL OFFICE
ASSOCIATED FURNITURE / CURATION JOSÉ LÉVY



Disderot x Joseph-André Motte
J14 floor lamp in satin-brushed glass



Sokoia «Trio Amoureux» (love triangle)
France, love and Japan chairs



Céline Wright
Cirrus suspension



Kouseido x José Lévy
Wooden shelf



Sokoia
Ildo armchair



Cinna x Duchaufour-Lawrance
Cupidon side table



Ligne Roset x Mauro Lipparini
Odessa table / black sandstone top



Disderot x Joseph-André Motte
Table lamp J13

THE PROTOCOL OFFICE
ASSOCIATED ARTWORKS / CURATION JOSÉ LÉVY



Philippe Marinig
Geisha leaving a taxi photo



CIVA Vins d'Alsace
Vineyard landscape photo



Soko armchairs

The colorful Ildo seats are arranged in the style of a Kokeshi doll installation.



Design ©José Lévy

Sokoa Ildo seats
Céline Wright suspension
Cinna x Noé Duchaufour-Lawrance side tables
CIVA Vins d'Alsace photo

Kouseido x José Lévy shelf
Disderot x Joseph-André Motte lights



Design ©José Lévy

Kouseido x José Lévy shelf
Disderot x Joseph-André Motte lights
Philippe Marinig photo
Sokoia «Trio Amoureux» chairs / France, Japan and Love

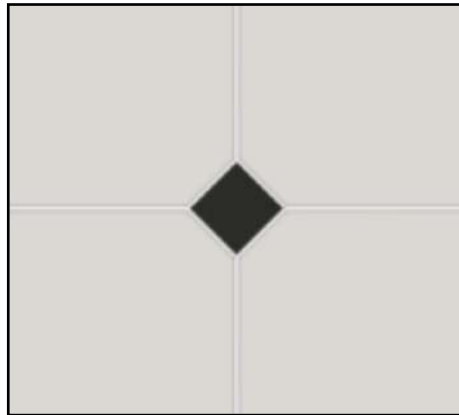
Cinna x Noé Duchaufour-Lawrance side table
Ligne Roset x Mauro Lipparini table
Sokoia seats

LAVATORIES

The bathrooms become soothing cocoons, completely enveloped in a Fjord hue, like the lightness of a cloud. The walls, floors and ceiling, as well as all the **Decotec** taps, blend into this subtle grey-green, creating a soft, immersive ambience.

CORRIDORS

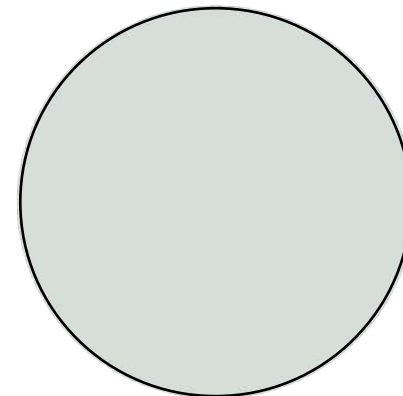
The corridors link the different areas of the France Pavilion, providing an harmonious transition between the spaces and their functions. The use of a floor covering in the style of the historic French cabochon tiles gives corridors a visual continuity. The Fjord blue ceiling (a very pale grey-green) gives a feeling of serenity and elevation, while the «Place des Vosges» wall lamps from **Pradier** are reminiscent of French gardens.



Flooring
Cabochon effect



Roger Pradier
«Place des Vosges» wall lamps



Painting
Fjord



Design ©José Lévy

Roger Pradier «Place des Vosges» wall lamps
Cabochon effect flooring



Design ©José Lévy

Decotec equipment
Fjord painting

THE BISTRO

Located on the fourth floor of the France Pavilion, the Kayser bistro made of wood, gold and ikebana, combines French tradition with Japanese floral art. The warm atmosphere of honey-colored wood is accentuated by a wood-tiled floor, wood-panelled walls and large mirrors lightly tinted with gold, framed with mouldings in a nod to the Grand Siècle decor of Parisian restaurants. A ceiling of suspended lights, featuring glass spheres by **Roger Pradier**, enhances the overall effect. In the centre, the main feature of the room: the wine cellar. On either side, a set of heraldic mirrors designed by **José Lévy** for **Maison Dada** interacts with the majestic floral sculptures created by ikebana master **Shuho Hananofu**.

The wine waiters' station is reminiscent of the mural depicting French vineyards. The tables and chairs were designed by **Jean-Baptiste Fastrez**, winner of the competition organised by France Pavilion and **Tectona**, in partnership with **Mobilier national** and **Villa Noailles**. These original creations combine modernity and craftsmanship, making the bistro a unique place, where French gastronomy and Japanese aesthetics meet in a poetic way.



Jean-Baptiste Fastrez
Kaeru table and chairs («frog» in Japanese)
Tectona in partnership with **Mobilier national** and **Villa Noailles**



Roger Pradier
Boréal N1 suspension



Maison Dada x José Lévy
Pale gold Morocco mirror



Design ©José Lévy

Roger Pradier suspensions
Maison Dada x José Lévy mirror
Tectona x Jean-Baptiste Fastrez tables and chairs, in partnership with Mobilier national and Villa Noailles

Floral art by Shuho Hananofu
CIVA Vin d'Alsace photos



Design ©José Lévy

Roger Pradier suspensions
Tectona x Jean-Baptiste Fastrez tables and chairs, in partnership with Mobilier national and Villa Noailles



Design ©José Lévy

Roger Pradier suspensions
Tectona x Jean-Baptiste Fastrez tables and chairs, in partnership with Mobilier national and Villa Noailles



THE FLORAL ART OF SHUHO HANANOFU, IKEBANA MASTER

At the invitation of José Lévy, with whom she has already worked, Shuho Hananofu will create the floral sculptures for the bistro and the Partners Lounge. During the six months of the World Expo, she will be working with a team of 40 florists, who will take turns every three days under her direction. In Osaka, she will make a floral offering at the opening of the France Pavilion and on France Day.

Shuho Hananofu (the Flower Maiden) was the first flower maiden and Director of Cultural Affairs at Kyoto's Jishoji ('Silver Temple', Ginkakuji) from 2004 to 2014. Since, she has shared her practice in France, China, USA and Mexico. In France, she has collaborated with the Palais de Tokyo, the Musée Cernuschi, the Musée Guimet and numerous artists and musicians. In 2015, she founded «Seirensa Hanatomo no kai» and teaches floral art in schools throughout the country. In 2016, she became involved in the «Japan House» project of the Ministry of Foreign Affairs. A visiting professor at the Department of Arts and Crafts, Kyoto University of the Arts (2017-2020), she also taught at the Faculty of Arts, Kyoto Prefectural University. Her publications include 'Created Nature - Flowers of Ginkaku Jishoji Temple' (Tankosha) and 'Ippongusa - The Power of Life Taught by Flowers' (Tokuma Shoten).

THE RECEPTION ROOM

Adjacent to the bistro, the reception room is a multi-purpose space designed to host conferences, exhibitions and events. The flexibility of its structure is enhanced by a modular wall which, when opened towards the restaurant, transforms the two spaces into a large, fluid and welcoming living space.

With a seating capacity of 140, the room meets Japanese reception standards, but avoids being austere thanks to the Soko's multicolored chairs arranged like a field of flowers. These include the 3 chairs of the 'Trio Amoureux', dressed up in the colors of France, Japan and Love, which are randomly scattered around the room, inviting visitors to find them.

THE RECEPTION ROOM ASSOCIATED FURNITURE / CURATION JOSÉ LÉVY



Sokoa
Klik armchair



Ligne Roset x Guillaume Delvigne
Intervalle black wooden coffee table



Sokoa
Kanpoa barstool



Sokoa
KLIK high chair



Sokoa multicolored chairs

Three chairs from the 'Trio Amoureux', dressed up in the colors of 'France', 'Japan' and 'Love', will be scattered among the 140 other chairs.



Design ©José Lévy

Sokoa chairs & armchairs
Ligne Roset x Guillaume Delvigne coffee table



Design ©José Lévy

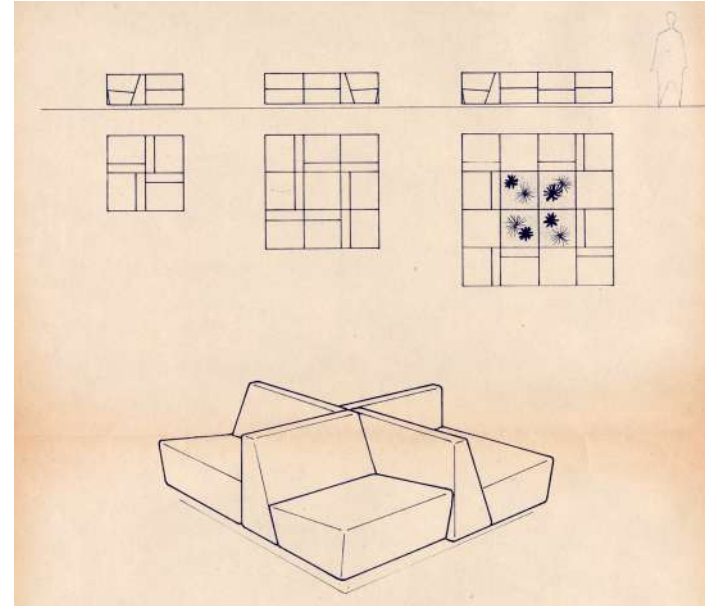
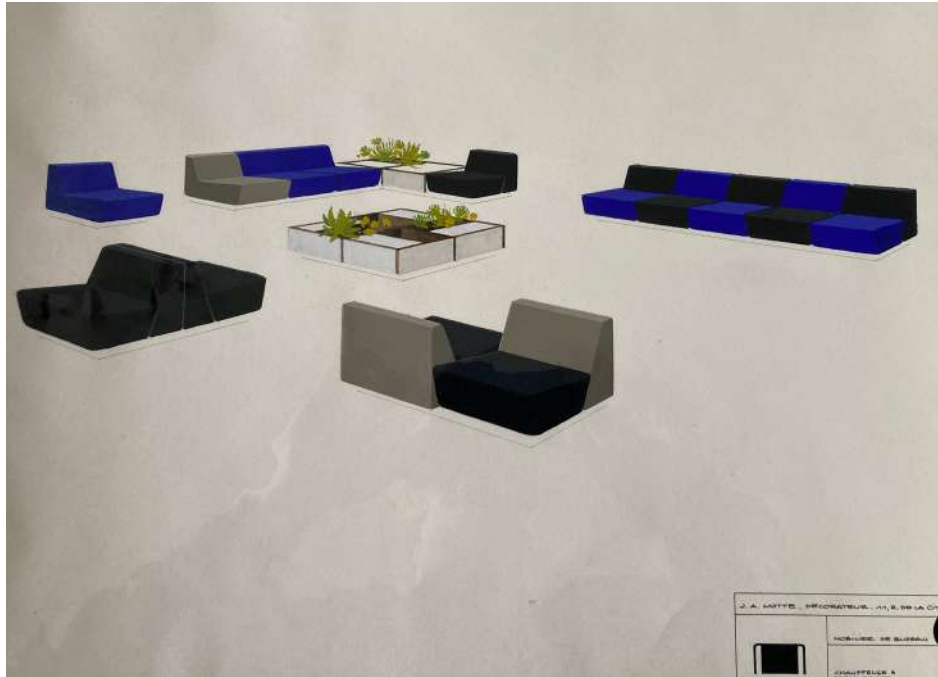
Roger Pradier suspensions
Sokoa multicolored chairs

THE PARTNERS LOUNGE

Located on the 4th floor, the Partners Lounge is an exclusive area designed to host meetings and networking events. It offers an intimate setting inspired by nature. Mirror-polished walls reflect the natural light from the large bay window, which opens to an airy exterior with a **Lafuma** outdoor furniture.

This conservatory is enhanced by floral installations designed by ikebana master **Shuho Hananofu**, iconic lamps from **Olivier Mourgue's** flower series and bird silhouette table lamps by **Agnès Bitton** for **Disderot**. A dreamlike panoramic fresco by **Stella Cadente** adorns one of the walls, along with sumo photos by artist **Philippe Marinig**. These exclusive seats are based on plans drawn by **Joseph-André Motte** held at **Mobilier national**. This unique furniture has been specially developed by **Duvivier Canapés**, under the artistic direction of **José Lévy** on the occasion of the France Pavilion. Each piece of the furniture is upholstered by **Lelièvre** in a choice of eight fabrics in wood tones.

THE PARTNERS LOUNGE EXCLUSIVE FURNITURE / CURATION JOSÉ LÉVY



Duvivier Canapés x Joseph-André Motte A preview for the France Pavilion

Seating and table set, based on plans drawn by **Joseph-André Motte** held at **Mobilier national**.
Above - **Lelièvre** furnishing fabrics for the **Duvivier Canapés x Joseph-André Motte** seats

THE PARTNERS LOUNGE
ASSOCIATED FURNITURE / CURATION JOSÉ LÉVY



Disderot x Olivier Mourgue
Flower series 2093 floor lamps



Disderot x Agnès Bitton
Metèque table lamp



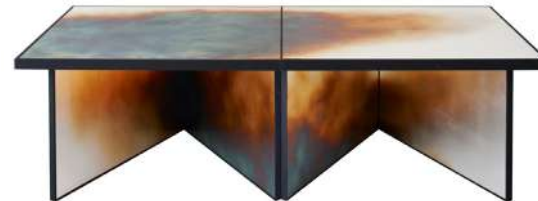
Kouseido x Garnier & Linker
Gold screen / golden leaf on wood



Disderot x Olivier Mourgue
Flower series 2093 suspension



Maison Dada
Lov Lov stool



Kouseido x Pierre Charrié
Tenkai coffee table



Sokoa
Mendi side table

THE PARTNERS LOUNGE
ASSOCIATED ATWORKS / CURATION JOSÉ LÉVY



Philippe Marinig
Geisha photo



Philippe Marinig
Geisha photo

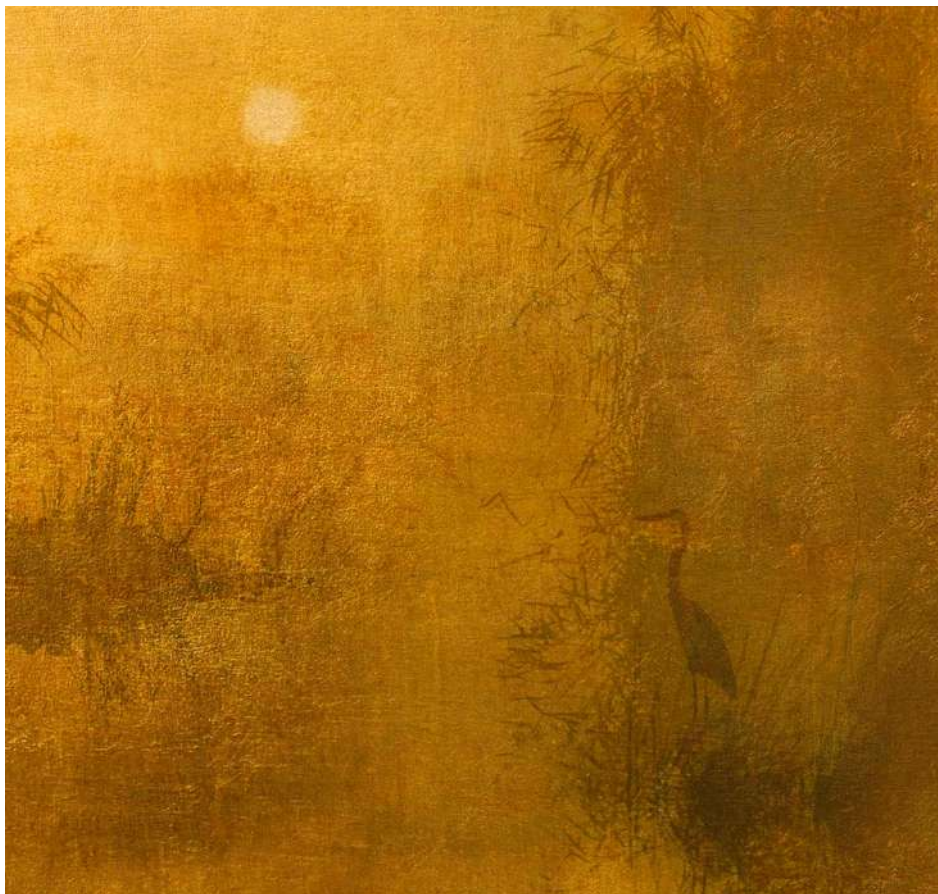


Philippe Marinig
Homasho before dohyo iri photo



Philippe Marinig
Sumo / Salt throwing photo

THE PARTNERS LOUNGE
ASSOCIATED ATWORKS / CURATION JOSÉ LÉVY



Stella Cadente
Gold fresco



Shuho Hananofu
Floral art and vases



Shuho Hananofu
Floral art and vases



Shuho Hananofu
Floral art and vases



Shuho Hananofu
Floral art and vases



Design ©José Lévy

Duvivier Canapés x Joseph-André Motte x Lelièvre x Mobilier national seats
Disderot x Olivier Mourgue lights
Disderot x Agnès Bitton table lamp
Kouseido x Pierre Charrié coffee table
Sokoa side table

Stella Cadente fresco
Philippe Marinig photos
Floral art by Shuho Hananofu



Design © José Lévy

Duvivier Canapés x Joseph-André Motte x Lelièvre x Mobilier national seats
Disderot x Olivier Mourgue luminaires
Disderot x Agnès Bitton table lamp
Maison Dada x Thomas Dariel stool
Sokoia side table

Kouseido x Pierre Charrié coffee table
Kouseido x Garnier & Linker screen
Stella Cadente fresco
Philippe Marinig photos
Floral art by Shuho Hananofu



Design ©José Lévy

Duvivier Canapés x Joseph-André Motte x Lelièvre x Mobilier national seats
Disderot x Olivier Mourgue lights
Disderot x Agnès Bitton table lamp
Maison Dada x Thomas Dariel stool
Sokoa side tables

Kouseido x Garnier & Linker screen
Stella Cadente fresco
Philippe Marinig photos
Floral art by Shuho Hananofu



Design ©José Lévy

Lafuma outdoor furniture



A symbolic collaboration with Saint James

For the World Expo, José Lévy has created a capsule collection in collaboration with Saint James. The line includes sweaters, polo shirts, caps and a multi functional neckerchief, the ultimate Japanese accessory that can be used as a handkerchief, scarf or protection. Each item has an embroidered crest symbolising the union between France and Japan. This initiative reflects Lévy's poetic and humanist vision, deeply inspired by his relationship with Japanese culture.

More information to come



J O S É L É V Y 

José Lévy
www.joselevy.fr
[#joselevyjoselevy](https://twitter.com/joselevyjoselevy)

PR contact
José Lévy

Julien Verry
+ 336 43 10 32 08
julien@verrygoodbureau.co
www.verrygoodbureau.co